

# PHASE TWO, MID-RIVERS YACHT AND COUNTRY CLUB

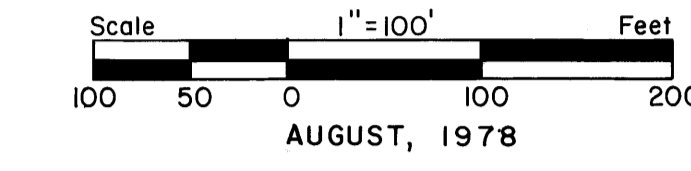
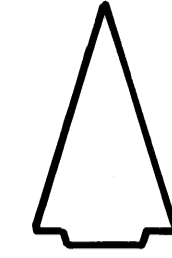
Lying In  
Sections 2 & 3, Township 38 South, Range 40 East  
Martin County, Florida

I, LOUISE V. ISAACS, CLERK OF THE CIRCUIT COURT OF MARTIN COUNTY, FLORIDA, HEREBY CERTIFY THAT THIS PLAT WAS FILED FOR RECORD IN PLAT BOOK 7, PAGE 60, MARTIN COUNTY FLORIDA, PUBLIC RECORDS, THIS    DAY OF   , 1978.

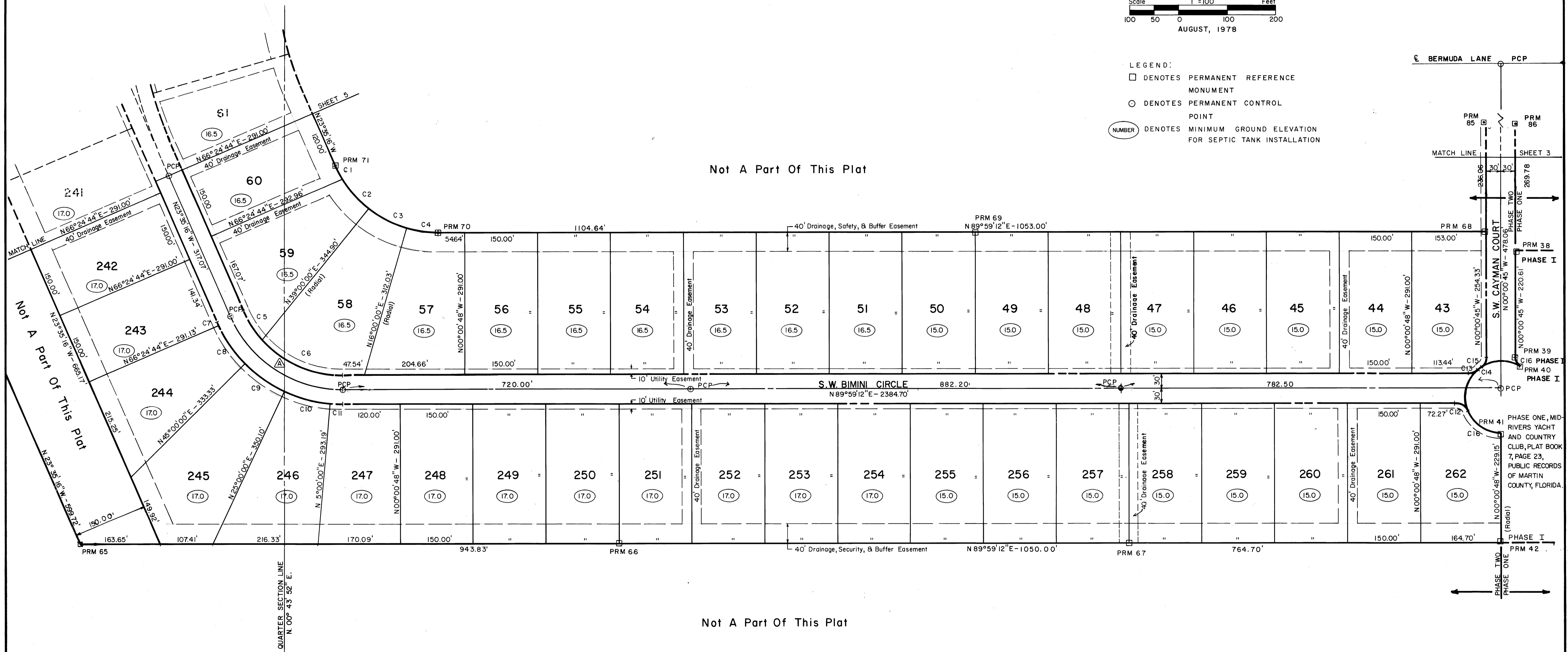
LOUISE V. ISAACS, CLERK  
CIRCUIT COURT  
MARTIN COUNTY, FLORIDA

FILE NO. \_\_\_\_\_  
BY: \_\_\_\_\_ DEPUTY CLERK

NORTH



- LEGEND:
- DENOTES PERMANENT REFERENCE MONUMENT
  - DENOTES PERMANENT CONTROL POINT
  - (NUMBER) DENOTES MINIMUM GROUND ELEVATION FOR SEPTIC TANK INSTALLATION



Curve	Radius	Delta (Δ)	Length	Tangent	Chord	Chord Bearing
C 1	230.00	7°24'41"	30.09	15.06	30.06	S27°20'06"E
C 2	230.00	19°55'03"	79.95	40.38	79.55	S41°02'28"E
C 3	230.00	23°00'00"	92.43	46.79	91.71	S62°30'00"E
C 4	230.00	16°00'48"	64.28	32.35	64.07	S92°00'24"E
C 5	220.00	17°53'56"	68.73	34.65	68.45	S32°32'14"E
C 6	220.00	48°31'36"	186.33	99.16	180.81	S65°45'00"E
C 7	280.00	1°46'23"	8.66	4.33	8.66	S24°28'27"E
C 8	280.00	19°38'21"	95.98	48.46	95.51	S35°10'49"E
C 9	280.00	20°00'00"	97.74	49.37	97.24	S55°00'00"E
C 10	280.00	20°00'00"	97.74	49.37	97.24	S75°00'00"E
C 11	280.00	5°00'48"	24.50	12.26	24.49	S87°30'24"E
C 12	25.00	68°34'15"	24.48	16.73	27.80	S56°13'41"E
C 13	25.00	44°05'58"	19.24	10.13	18.77	N67°57'01"E
C 14	75.00	10°42'23"	14.01	7.03	13.44	N51°16'02"E
C 15	25.00	56°37'59"	24.71	13.40	23.72	N28°18'14"E
C 16	75.00	63°34'15"	88.45	50.18	83.41	N56°13'41"W
Δ	250.00	66°25'32"	289.84	163.68	273.87	N56°48'02"W